

M E N U

CHECK IN / OUT

ESSENTIALS

HOUSEKEEPING

TRANSPORT &  
CONCIERGE

OUTSIDE

HOUSE RULES

HEATING,  
WOOD STOVE  
& APPLIANCES

DINING  
IN NISEKO

SKI SLOPES,  
RENTALS,  
SCHOOL/TOURS

ONSENS

SHOPS

EMERGENCY



welcome



**CHALET TACITO**  
NISEKO

048-15 51 Hokkaido, Abuta-gun  
Niseko Cho, Niseko 432-42  
Japan





We're delighted to have you here in beautiful Niseko and we hope you feel right at home in our luxurious retreat. On Arrival, the chalet will be open, heated and ready for you with the keys inside. Our property manager and staff close by to support when needed. This guide is here to help you settle in and make the most of your time with us.

We hope you enjoy every moment of your stay at Chalet Tacito.

**For inquiries and questions contact our property manager William Ramsay (Billy) on WhatsApp or Phone +81 (0)90 9382 8382**



CHECK IN / CHECK OUT



On check out, Guests are expected to leave the house in the same state they found it including washing dishes and cleaning kitchen appliances.

We appreciate the odd glass or plate may get broken; please report any damage on check out so we can prepare the house for the next guests.



# ESSENTIALS



Wifi: DecoTacito  
PW: Armagh6566\$\$



The keys for the house and garage are on the entranceway ledge.



When you leave the house, please use the Entrance Lockbox Code: 3642

## STAY SAFE



Driving in blizzards/stormy conditions and from falling snow from roofs.

If you are in a traffic accident you MUST call 910 for the police to make a report.

Unfortunately, theft of jackets, bags and hats is common in some of the bars in Hirafu Town. Please keep your belongings safe.



# HOUSEKEEPING & GARBAGE MANAGEMENT



Housekeeping visits approximately every 3rd day to take out garbage and change towels. Guests can request additional cleaning services this is charged.

Please message your property manager with requests.

Service	Description	Price
Bed change and bathroom clean	Make beds and change towels	¥1,500 per guest
Full House Clean During Stay	Linen, towel change and full house clean	¥10,000 per guest
Cleaner Call Out	Request house visit and cleaning cost	¥6,000
Extra Cleaning Requests	Cleaning requests, helping dinner, etc.	¥4,400 per hour
Housekeeper for 1 day	Cleaning requests (does not include linen, towel changes)	¥27,500 per day



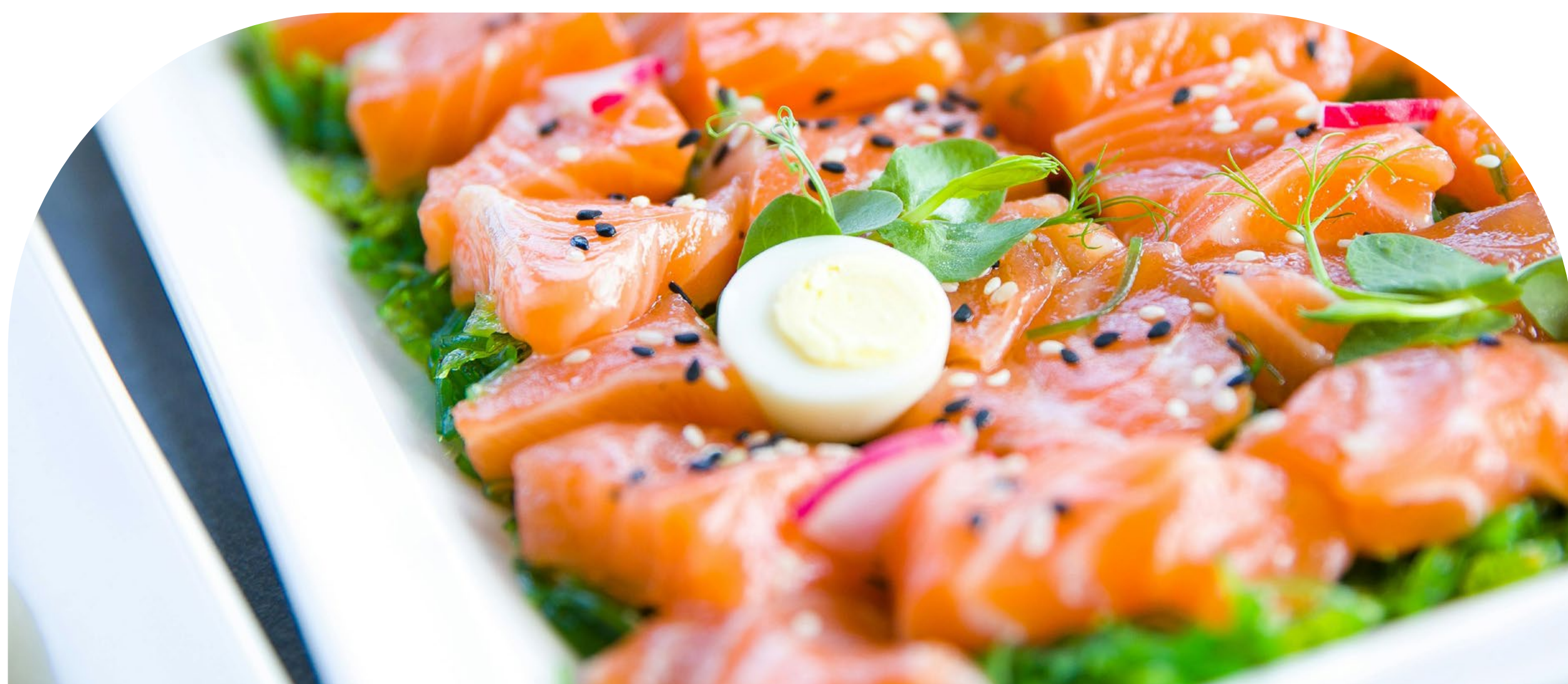
## TRANSPORT & CONCIERGE SERVICES



Please book ahead, subject to availability.

Airport Pick ups One way ¥40,000  
Airport Pick ups Return ¥70,000  
Private Vehicle 6 hrs ¥40,000  
Shopping/Supermarket Trip ¥5,000  
+¥4,000 per hour

Please message the property manager: +81 90 9382 8382



### **In-house Dining**

Have a chef visit the Chalet to prepare lunch or dinner based on your needs.

Lunch from ¥7,000 per person  
Dinner from ¥17,500 per person



## OUTSIDE THE HOUSE



Snow-clearing team works early mornings.

---

If there is heavy snowfall forecast, PLEASE PARK CARS IN THE GARAGE.

---

Watch out for falling snow at the side of the house and during your trip.

---

DO NOT LET KIDS PLAY IN A SNOW FALL ZONE at our house or other places.

---

Please use the shovels provided if you need minor clearing.

---

if you have any major issues with snow build up, please let us know.



# HOUSE RULES



No smoking inside. If you smoke outside, please do not litter.

---

---

No pets.

---

---

No shoes inside the house.

---

---

Damage and Repairs: Guests are responsible for any damages incurred during their stay and must report any issues promptly.

---

---

Onsen and Sauna Use: Follow all guidelines and usage instructions. No glassware or food in the bath area.

---

---

Parking: Please park vehicles in the garage since we clear snow outside the house every heavy snowfall.

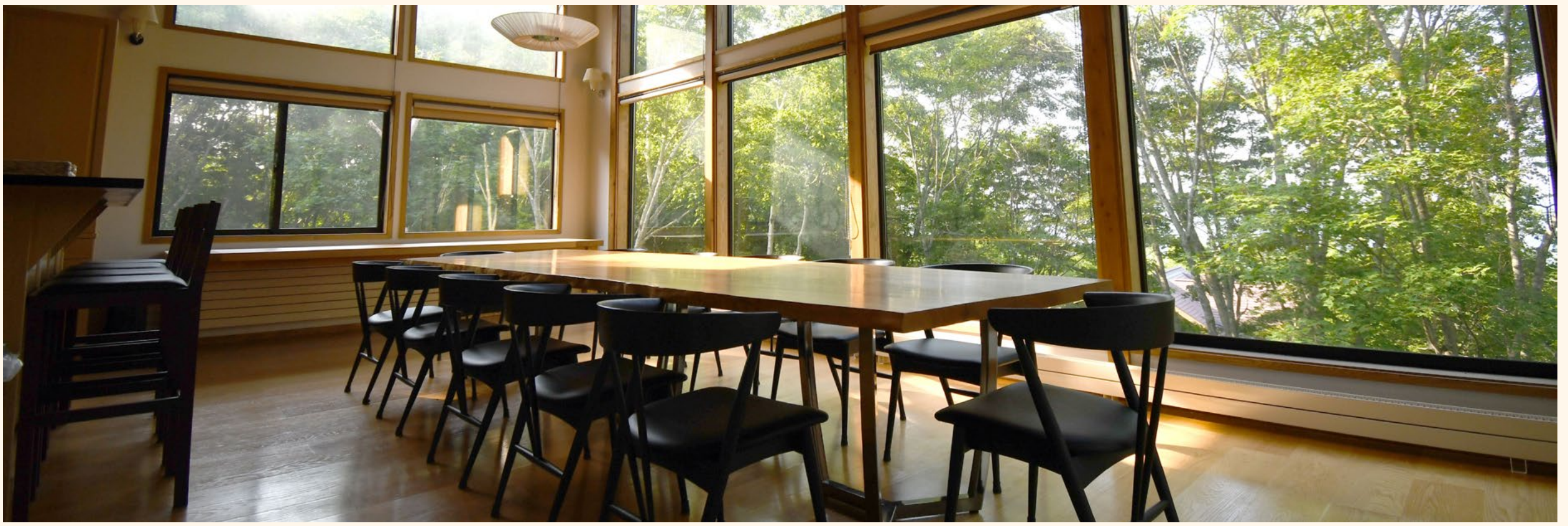
---

---

Local Guidelines: Follow all local laws and regulations during your stay.



## HEATING & WOOD-BURNING STOVE



### HEATING

The chalet has underfloor heating, central heating and air-conditioners/heaters in the bedrooms.

The temperature of each radiator can be adjusted with the control knob.

If the house is too hot or cold after you adjust these, please contact the property manager.



### LIGHTING THE FIRE

We set the fire for your arrival. Please find a selection of fire lighters and smaller pieces of wood to start a new fire, it is best to get the fire going before putting larger pieces on to it. If you have problems, please contact the property manager.



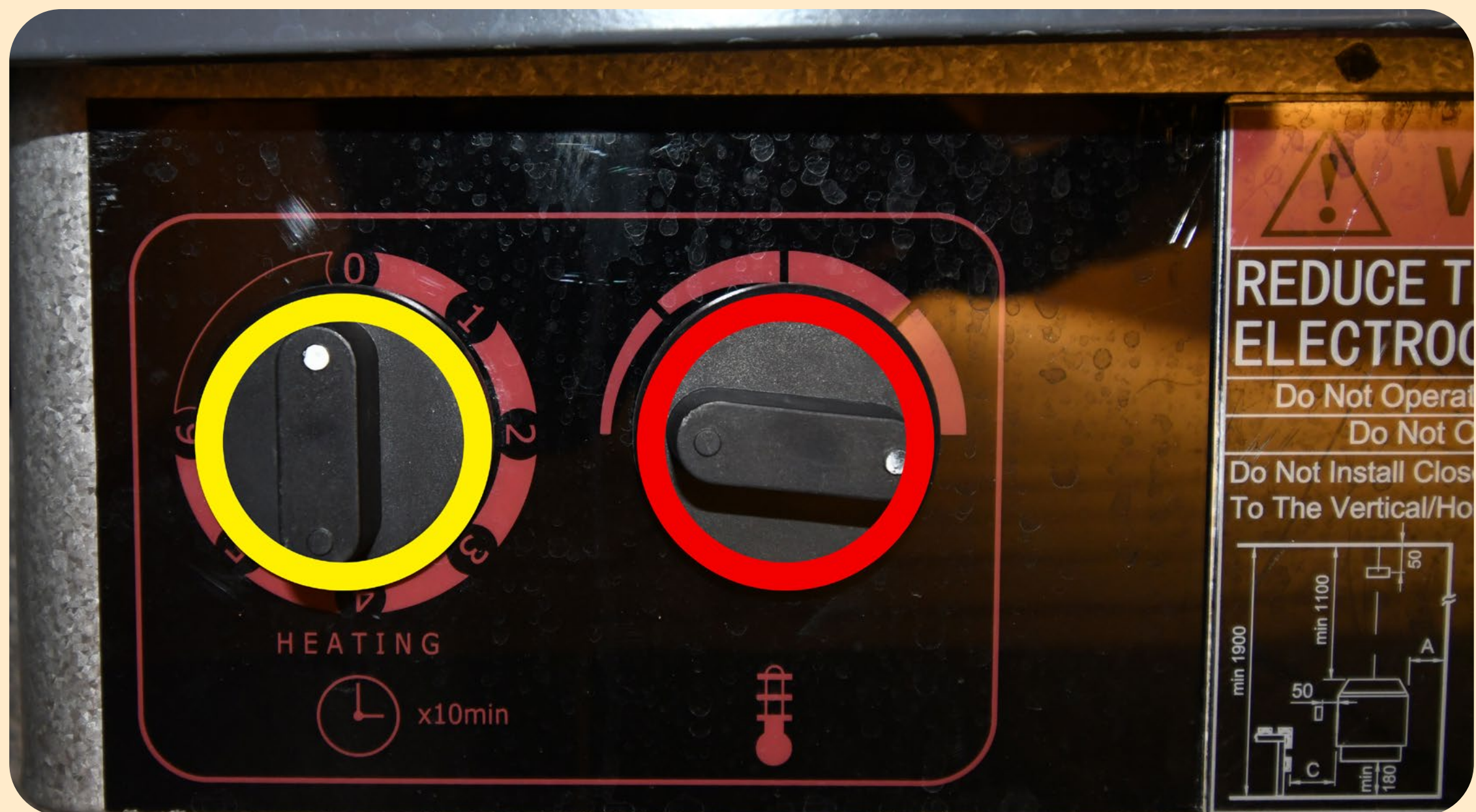
# WASHING MACHINES

Laundry detergent located next to the washing machines.  
See below for translated button instructions.





## SPA - SAUNA



1) Turn on the Sauna 30 minutes before use.

2) Adjust the temperature with the right dial (red circle). The recommended temperature is between 70-90°C.

3) Turn the left dial (yellow circle) past 3h and then back to 2h or 3h. (2h means it will stay ON for 2 hours)

4) Make sure to turn on the fan inside the room while using the Sauna.

\* DO NOT throw water onto the sauna heater (stones).

5) Turn off the sauna by bringing down the timer dial (left dial) to 0.



## SPA - JACUZZI



### Bath Use and Temperature

The main bath controls are on the wall on your right as you enter the spa room. The bath will be full and heated on your arrival.

The bath is programmed to reheat and clean so you do not need to drain it after use. To keep water warm, press the red button after use (24 hours).

To make warmer, press the orange button and use the taps in the bath.

Do not add anything other than water into the bathtub including bath salts, soap, etc.





# SPA - JACUZZI WATER CLEANING SYSTEM



Once you have finished bathing, press **BUTTON 1** to turn on the cleaning system, then press **BUTTON 2** to start the clean.

**CLEANING TAKES 2hrs** so please operate after you finish.

If you wish to re-fill the bath it takes approximately 90 mins.



## KITCHEN - RICE COOKER



Add washed rice to the cooker with water.

Press Start - the cooking process takes about 50 minutes.

The cooker will keep the rice warm after cooking.



## DINING



During winter season restaurants are extremely busy and we recommend use TableCheck to find availability. Please make an account and you can reserve easily with a credit card.

[Check Restaurant Availability  
on TableCheck](#)

## RESTAURANTS CLOSE TO ANNUPURI

Cucina Italiano Santo - Italian

Sanu - Italian

Annupuri Garden Ichiseko

Lucky Fingers

Kobito - Japanese Izakaya

Pizza So

Taj Mahal - Indian



## SKI SLOPES

- Niseko Annupuri Kokusai Ski Area
- Niseko Moiwa Ski Resort
- Niseko Village
- Niseko Grand Hirafu
- Niseko Hanazono Resort
- Iwanai Resort





## SKI SCHOOL & TOURS



You can book directly with our selected partners and please mention you are a Tacito Guest.

**BOOK SKI SCHOOL**

**TYPE TWO THREE**  
**GUIDING/CAT TOURS**

*(Highly recommended tours for beginners to advanced riders. Please contact the property manager if you have questions.)*

**SKI RENTALS**  
**WINTER FIRST**



ONSENS NEAR ANNUPURI



Niseko Annupuri Onsen

Kanronomori Onsen

Niseko Grand Hotel

Niseko Northern Resort

Iroha Onsen



## ESSENTIAL SHOPS



## LARGE SUPERMARKETS

- Lucky Supermarket Kutchan (20 min. drive)
  - MaxValu Kutchan (20 min. drive)
  - A Mart Niseko Town (10 min drive)

*This is a medium-sized supermarket with fresh meat and vegetables*

## CONVENIENCE STORES

- Seven Eleven (4km)
- Seicomart Niseko Town (10 min. drive)

## WINE SHOP

- Cave de Bambou Niseko town (10 min. drive)

## BAKERY / PATISSERIE

- La Villa LUPICIA (10-15mins Drive towards Hirafu)



# EMERGENCY NUMBERS



**Police**

110

**Ambulance**

119

**Fire**

119

**Niseko International Clinic**

0136-21-5454





*Thank you*

for choosing Chalet Tacito for your stay in Niseko.  
Safe travels, and we hope to welcome you back to  
Chalet Tacito soon!